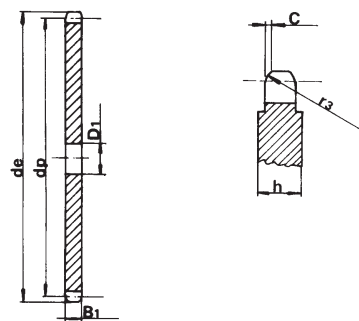


# P L A T E W H E E L S

## Platewheels 20 x 16 mm

for roller chains in compliance with DIN 8164

Z	d <sub>e</sub>	d <sub>p</sub>	S
			D <sub>1</sub>
12	85.7	77.28	14
14	98.3	89.88	14
15	104.6	96.18	14
16	110.9	102.52	16
17	117.2	108.82	16
19	129.9	121.52	16
20	136.2	127.84	16
21	142.6	134.18	20
23	155.3	146.88	20
26	174.3	165.92	20
27	180.7	172.27	20
35	231.5	223.12	20
38	250.6	242.18	25
39	256.9	248.54	25
40	263.3	254.92	25



### PLATEWHEEL — mm

TOOTH RADIUS $r_3$	20
RADIUS WIDTH C	1.7
PLATE TOOTH WIDTH $B_1$	14.5

### CHAIN — mm

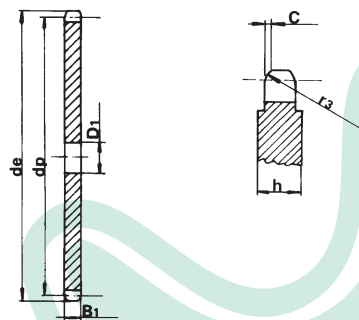
PITCH	20
INNER WIDTH	16
ROLLER - $\varnothing$	12

# P L A T E W H E E L S

## Platewheels 30 x 17.02 mm

for roller chains in compliance with DIN 8180

Z	d <sub>e</sub>	d <sub>p</sub>	S
			D <sub>1</sub>
11	117.4	106.48	20
12	126.9	115.91	20
13	137.3	125.36	20
15	156.2	144.29	20
17	175.2	163.27	20
21	213.2	201.29	25
22	222.8	210.80	25
23	232.3	220.32	25
27	270.4	258.41	25
30	299.0	287.00	25
38	375.2	363.27	30



### PLATEWHEEL — mm

TOOTH RADIUS $r_3$	27
RADIUS WIDTH C	2.2
PLATE TOOTH WIDTH $B_1$	15.8

### CHAIN — mm

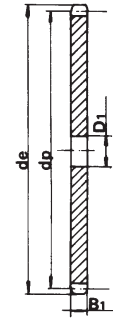
PITCH	30
INNER WIDTH	17.02
ROLLER - $\varnothing$	15.88

# PLATEWHEELS FOR CONVEYORS AND ELEVATORS

Z	ROLLER 25			ROLLER 28			ROLLER 31		
	d <sub>e</sub>	d <sub>p</sub>	D <sub>1</sub>	d <sub>e</sub>	d <sub>p</sub>	D <sub>1</sub>	d <sub>e</sub>	d <sub>p</sub>	D <sub>1</sub>
6	115.0	100.00	20				116.2	100.00	20
7	132.7	115.24	20				133.8	115.24	20
8	148.1	130.60	25	150.2	130.60	25	152.3	130.60	25
9	163.7	146.20	25				167.9	146.20	25
10	179.3	161.85	25	181.4	161.85	25	183.5	161.85	25
11	195.0	177.50	25				199.2	177.50	25
12	211.0	193.20	25				212.0	193.20	25
13	226.4	208.95	30				230.6	208.95	30
14	242.2	224.70	30	244.3	224.70	30	246.4	224.70	30
15	257.9	240.45	30	260.0	240.45	30	262.1	240.45	30
16	273.8	256.30	30				278.0	256.30	30
17	289.5	272.05	30				293.7	272.05	30
18	305.4	287.95	30	307.5	287.95	30	309.6	287.95	30
19	321.3	303.80	30				325.5	303.80	30
20	337.1	319.60	30				341.3	319.60	30
21	352.9	335.45	30				357.1	335.45	30
22				370.9	351.35	30	373.0	351.35	30
23							388.9	367.20	30
24	400.0	383.05	30	402.6	383.05	30	404.7	383.05	30
25	416.4	398.95	30				419.7	398.95	30
26	432.3	414.80	30				436.5	414.80	30
27	448.2	430.70	30				452.4	430.70	30
28	464.0	446.55	30				468.2	446.55	30
30	495.8	478.35	30						
32							531.8	510.10	30
35							579.5	557.80	30
38	622.9	605.45	30				622.0	605.45	30

## Platewheels P50

designed for conveyors and elevators



R 25 - 28 - 31

### CHAIN mm

PITCH	50
INNER WIDTH	11.5
ROLLER	25
PLATE THICKNESS B <sub>1</sub>	10.5

### CHAIN mm

PITCH	50
INNER WIDTH	15
ROLLER	28
PLATE THICKNESS B <sub>1</sub>	13.8

### CHAIN mm

PITCH	50
INNER WIDTH	15
ROLLER	31
PLATE THICKNESS B <sub>1</sub>	13.8

Z	ROLLER 25			ROLLER 31		
	d <sub>e</sub>	d <sub>p</sub>	D <sub>1</sub>	d <sub>e</sub>	d <sub>p</sub>	D <sub>1</sub>
8	213.4	195.98	30	217.6	195.98	30
9	236.8	219.30	30	241.0	219.30	30
10	260.2	242.77	30	264.4	242.77	30
11	283.7	266.25	30	287.9	266.25	30
12	307.3	289.80	30	311.5	289.80	30
13	330.9	313.42	30	334.1	313.42	30
14				358.7	337.05	30
15	378.1	360.67	30	382.3	360.67	30
16	401.9	384.45	30	406.1	384.45	30
17				429.7	408.07	30
20	496.9	479.40	30			
21				524.8	503.17	30
25	615.9	598.42	30	620.1	598.42	30

## Platewheels P75

designed for conveyors and elevators

R 25 - 31

### CHAIN mm

PITCH	75
INNER WIDTH	11.5
ROLLER	25
PLATE THICKNESS B <sub>1</sub>	10.5

### CHAIN mm

PITCH	75
INNER WIDTH	15
ROLLER	31
PLATE THICKNESS B <sub>1</sub>	13.8

Z	ROLLER 25			ROLLER 31			ROLLER 40		
	d <sub>e</sub>	d <sub>p</sub>	D <sub>1</sub>	d <sub>e</sub>	d <sub>p</sub>	D <sub>1</sub>	d <sub>e</sub>	d <sub>p</sub>	D <sub>1</sub>
8	278.7	261.31	30	282.9	261.31	30	283	261.31	30
9				314.1	292.40	30	314	292.40	30
10	341.2	323.61	30	345.4	323.61	30	345	323.61	30
11	372.5	354.95	30	376.7	354.95	30	378	354.95	30
12	403.9	386.40	30	408.1	386.40	30	409	386.40	30
13				439.6	417.90	30			
14				471.1	449.40	30	473	449.40	30
15				502.6	480.90	30			
16				534.3	512.60	30	536	512.60	30
17				565.8	544.10	30			
18				597.6	575.90	30			
19									
20							663	639.20	30

## Platewheels P100

Designed for conveyors and elevators

R 25 - 31 - 40

### CHAIN mm

PITCH	100
INNER WIDTH	11.5
ROLLER	25
PLATE THICKNESS B <sub>1</sub>	10.5

### CHAIN mm

PITCH	100
INNER WIDTH	15
ROLLER	31
PLATE THICKNESS B <sub>1</sub>	13.8

### CHAIN mm

PITCH	100
INNER WIDTH	22
ROLLER	40
PLATE THICKNESS B <sub>1</sub>	20

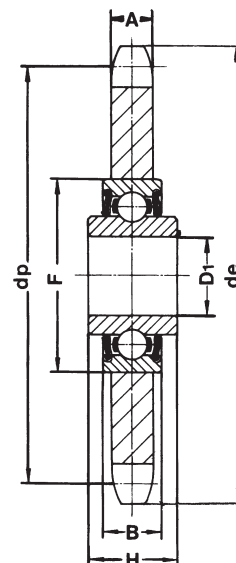
# I D L E R S P R O C K E T S

Z

	Passo	d <sub>e</sub>	dp	A	D1	F	B	H
23	8 x 3	62.15	58.75	2.8	16 <sup>+0.26</sup> <sub>+0.13</sub>	40	12	18.3
21	3/8" x 7/32"	68.00	63.90	5.3	16 <sup>+0.26</sup> <sub>+0.13</sub>	40	12	18.3
22	3/8" x 7/32"	71.00	66.93	5.3	16 <sup>+0.26</sup> <sub>+0.13</sub>	40	12	18.3
18	1/2" x 1/8"	78.90	73.14	3.0	16 <sup>+0.26</sup> <sub>+0.13</sub>	40	12	18.3
15	1/2" x 3/16"	66.80	61.09	4.5	16 <sup>+0.26</sup> <sub>+0.13</sub>	40	12	18.3
16	1/2" x 3/16"	70.90	65.10	4.5	16 <sup>+0.26</sup> <sub>+0.13</sub>	40	12	18.3
18	1/2" x 3/16"	78.90	73.13	4.5	16 <sup>+0.26</sup> <sub>+0.13</sub>	40	12	18.3
14	1/2" x 5/16"	61.80	57.07	7.2	16 <sup>+0.26</sup> <sub>+0.13</sub>	40	12	18.3
16	1/2" x 5/16"	69.50	65.10	7.2	16 <sup>+0.26</sup> <sub>+0.13</sub>	40	12	18.3
18	1/2" x 5/16"	77.80	73.14	7.2	16 <sup>+0.26</sup> <sub>+0.13</sub>	40	12	18.3
14	5/8" x 3/8"	78.00	71.34	9.1	16 <sup>+0.26</sup> <sub>+0.13</sub>	40	12	18.3
15	5/8" x 3/8"	83.00	76.36	9.1	16 <sup>+0.26</sup> <sub>+0.13</sub>	40	12	18.3
17	5/8" x 3/8"	93.00	86.39	9.1	16 <sup>+0.26</sup> <sub>+0.13</sub>	40	12	18.3
13	3/4" x 7/16"	87.50	79.59	11.1	16 <sup>+0.26</sup> <sub>+0.13</sub>	40	12	18.3
15	3/4" x 7/16"	99.80	91.63	11.1	16 <sup>+0.26</sup> <sub>+0.13</sub>	40	12	18.3
12	1" x 17.02	109.00	98.14	16.2	20 <sup>+0.26</sup> <sub>+0.1</sub>	47	14	17.7
13	1"1/4 x 3/4"	147.80	132.65	18.5	25 <sup>+0.26</sup> <sub>+0.1</sub>	52	15	21.0

Our chain tensioning sprockets are supplied complete with bearing, ready for assembly in special tension or transmission points. The accurate machining and stable assembly on a dual protective shield ball bearing ensure greater resistance to loads and wear. The central elongated ring of the bearing facilitates assembly on special machines of every type.

## Idler Sprockets with ball bearing

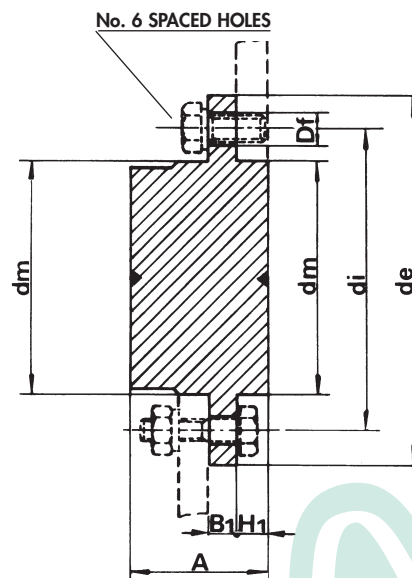


# DISASSEMBLING HUBS FOR PLATEWHEELS

Nr.

	d <sub>e</sub>	d <sub>i</sub>	d <sub>m</sub> <sup>h9</sup>	A	D <sub>f</sub>	B <sub>1</sub>	H <sub>1</sub>
30	55	45	30	20.0	4.2	4	3.0
40	70	58	40	25.0	5.2	5	5.2
50	80	67	50	32.0	6.2	7	7.0
60	90	76	60	38.5	6.2	7	8.7
70	110	94	70	45.5	8.2	8	10.5
80	130	107	80	55.0	8.2	12	15.0
100	170	140	100	73.0	10.2	17	23.0
140	220	182	140	83.0	12.2	20	23.0
160	245	205	160	93.0	16.5	25	25.0

## One sided hub for chain wheel



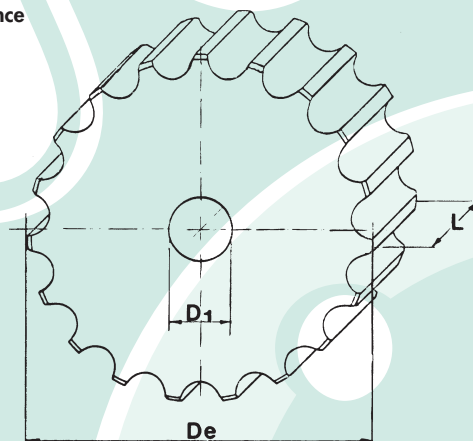
MATERIAL: FE 50

# T A B L E T O P W H E E L S

Z

	d <sub>e</sub>	D1	L
13	78.98	15	43.5
15	93.67	15	43.5
17	105.47	20	43.5
19	117.34	20	43.5
21	129.26	20	43.5
23	141.22	20	43.5
25	153.21	20	43.5
27	165.20	20	43.5
29	177.24	20	43.5
31	189.28	20	43.5

## Tabletop wheels P.1" 1/2 in compliance with DIN 8153



MATERIAL: FE 50